



recyclingBIN

greensburg's recycling station

laura wilke



The purpose of the cube is not only to serve as a collection point, but also to educate about the recycling process.

Interactive forms of information allow the user to learn about the material's life cycle.

Immediate reuse of products included are the pop bottle top wall and aluminum can tab collectors. These as well as can crushers and foldable display panels further engage the user.

recyclingBIN

interaction



aluminum cans



papercrete



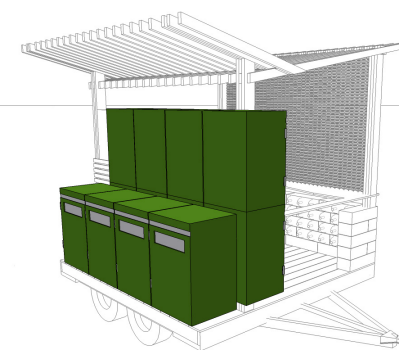
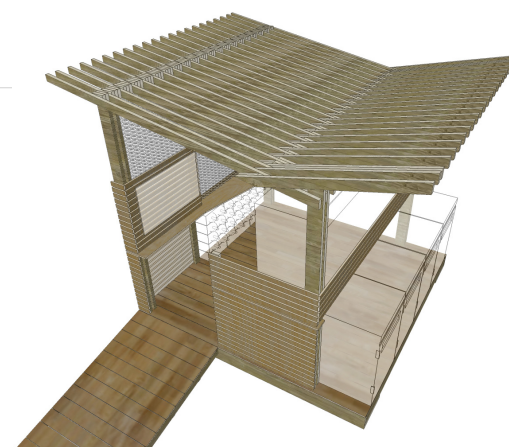
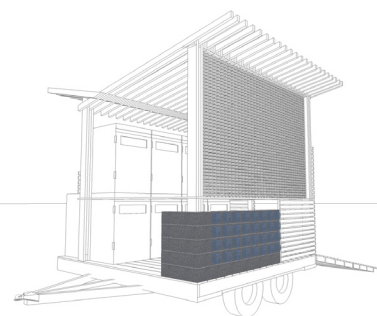
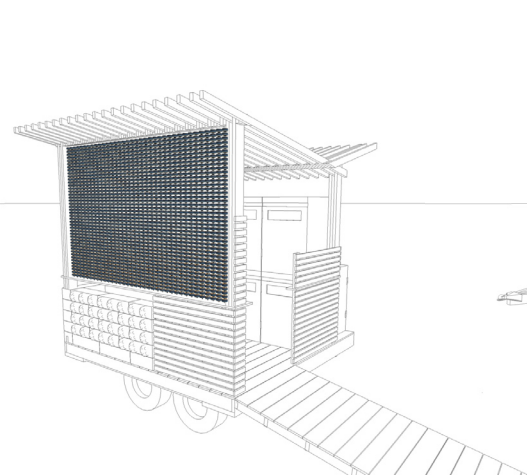
reclaimed wood



removable bins

To further promote the activity of recycling, the cube itself is made out of reused and recycled materials.

As an educational tool, the cube represents various ways in which the objects being put into the bins can be reused for building material and aesthetic features.



recyclingBIN

materials